

**B.O.Q FOR ELECTRICAL & DATA CABLING WORKS OF
PROPOSED BANK & ATM
AT MANTESWAR BRANCH, PURBA BARDHAMAN**

**MANTESWAR,
PURBA BARDHAMAN, WEST BENGAL- 713145**

**OWNER : UCO BANK
ZONAL OFFICE -ADMINISTRATIVE BUILDING ,ADD 1ST-CITY CENTER
,DURGAPUR ,WEST BENGAL-713213**

CONSULTING ARCHITECT - ARCHI SPACE CONSULTANT
ADDRESS :PACIFIC WIND ,69/3A RAJA S.C MALICK ROAD 2ND FOOR ,
NEAR BAGHAJATIN HOSPITAL
KOLKATA - 700086
CONTACT - 9830006396, 033-2425-0125

DATE : 15.10.2022

B.O.Q FOR ELECTRICAL WORK- MANTESWAR BRANCH, PURBA BARDHAMAN

SR.NO	DESCRIPTION	QTY.	UNIT	RATE (Rs.)	AMOUNT (Rs.)
<p>All installations shall comply with the requirements of the Indian Electricity Rules, 1956, as amended from time to time and as per relevant clauses of National Electrical Code, 1985. Installations shall conform in all respects to Indian Standard Code of Practice for electrical wiring installation IS. 732-1963 and IS 2274-1963. It shall also be in conformity with the regulations and requirements of the Local Electric Supply Authority. Wherever these specifications call for a higher standard of materials and/ or workmanship than those required by any of the above regulations, this specification shall take precedence over the said regulations and workmanship not covered by the above shall confirm to the Indian standards, unless otherwise called for. Equipment shall be given tropical and fungicidal treatment as per IS – 3202.</p>					
A.	MAIN PANEL :				
A.1	Main incoming switch fuse unit supplying , fixing 100A TPN HRC type for main incoming on M/s angel iron frame with 2-Nos cable entry box including connection with both end copper socketing by crimping method	2	SET		
A.2	4x25 mm sq pvc insulated copper flexible wire from cut out to main incoming switch fuse unit including connection with both end copper socketing by crimping method with 2-Nos 10 swg copper earth lid from earth bar to main switch	50	RFT		
A.3	1 No 100 A. TPN. MCCB (main incoming)	1	NOS.		
A.4	1 No 63A 4-P MCB. For A.C. controlling MAKE LEGRAND	1	NOS.		
A.5	1 No 40 A. TPN. MCB for Branch controlling	2	NOS.		
A.6	1 No 25 A. TPN. MCB for Generator controlling	1	NOS.		
A.7	1 No 63A 4-P change over switch	1	NOS.		
A.8	1 No 100A 4-bar copper busbar Lighting	1	NOS.		
A.9	1 No 100A 4-bar copper busbar A.C Power	1	NOS.		
A.10	1 No 25A D.P. MCB. For volt controlling	1	NOS.		
A.11	1 No 40A D.P. MCB. For sign board	1	NOS.		
A.12	1 No 63A 4-P MCB for UPS	1	SET		
A.13	Phase indicating lamp & controls with wiring (15W lamp Red, yellow & Blue)	3	NOS.		
B.	SUPPLYING & LAYING OF CABLE				
	supplying & Laying of above cable with 2Nos 10 SWG.CU earth on wall/column including supply & fixing of M.S. clamps/galvanised bar saddles@ 300 mm apart, as required making holes and mending good damages				
B.1	Main Meter to Main panel 3.5 core 50 Sq.mm.	45	RFT		
B.2	Main panel to main switch 3.5 core 35 Sq.mm.	45	RFT		
B.3	Main panel to A.C.D.B. 4 core 25 Sq.mm.	45	RFT		
B.4	Main panel to TPN Lighting DB.4 core 16 Sq.mm.	45	RFT		
C.	CABLE GLAND AND FINISHING THE END				
	Supplying & fixing of compression type brass cable gland along with rubber rings for dust and moisture proof entry of following 1.1 KV grade aluminium conductor PVC insulated & PVC sheathed armoured cable and finishing the end by crimping method including supply and fixing of "Dowell" make solderless socket, tapes and jointing materials as required to be completed in all respect				
C.1	Main Meter to Main panel 3.5 core 50 Sq.mm.	2	Each		
C.2	Main panel to main switch 3.5 core 35 Sq.mm.	2	Each		
C.3	Main panel to A.C.D.B. 4 core 25 Sq.mm.	2	Each		
C.4	Main panel to TPN Lighting DB.4 core 16 Sq.mm.	2	Each		

SR.NO	DESCRIPTION	QTY.	UNIT	RATE (Rs.)	AMOUNT (Rs.)
	Supply, installation, testing and commissioning of following MCB Distribution Board in sheet steel enclosure with double door and suitable for mounting on wall by surface / chase cutting and flushed with finished level to the position shown in the Electrical Layout complete in all respect, mending good all damages to the original finish, painting interconnection, etc. as required. :-				
D.	A.C DISTRIBUTION BOARD (A.C.DB)				
	4 way TPN MCB DB complete with busbar and the following MCBs/RCBO <u>Incoming:-</u> 1 no. : 415V 63 -A 4P MCB 10 KA <u>Outgoing :</u> 6 Nos 240V10-A SP MCB 6 Nos. 240V 20-A SP MCB 1 No. : Cable entry box	1	SET		
E.	LIGHTING DISTRIBUTION BOARD (L. DB)				
	4 way TPN MCB DB complete with busbar and the following MCBs/RCBO <u>Incoming:-</u> 1 no. : 415V 100 -A 4P MCB 10 KA <u>Outgoing :</u> 6 Nos 240V10-A SP MCB 6 Nos. 240V 20-A SP MCB 1 No. : Cable entry box	1	SET		
F.	UPS DISTRIBUTION BOARD (UPS. DB)				
	Supplying & fixing UPS D.B. counsumar unit 2+8 way SPN 1no 32 A DP MCB 4nos 6 A-S.P.MCB 4nos 10A-S.P.MCB	1	SET		
G.	POINT WIRING :				
	Supply, laying, connection & testing of light, fan point, wiring by 2x1.5mmsq(2x3/.029) + 1x1mmsq PVC insulated copper flexible wire maintaining the colour code as per direction in PVC conduit of 20mm with ISI mark 1.5 pvc wall thk. to conceal in wall partition mending good the damage, complete with pvc circular box, bend to be done as per drawing including 3 point ceiling rose where ever required. GI saddle to be used for fixing, pvc conduit/ flexible pipe may use if required in partition wall. All pvc pipes should be with ISI mark. No joints will be allowed inside pipe.Light, fan & plug point complete with modular type switch plate & MS box. Including the main circuit line 2x2.5mmsq+1x1.5mmsq earth PVC insulated Cu. Wire, maintaining the colour code. Circuit line for lighting switch board ,6 Amps plug board are to be drawn from lighting DB to Lighting board & 6A plug point board, 6/16 Amps plug point line are to be drawn from power DB. 3 Nos lighting board/ 03 Nos.6 Amps plug are to be connected from one circuit & 02 Nos. 6/16 plug to be connected from one circuit (Lighting S.Board height-32" from floor).				
G.1	Light Point - 1 Light point control by 01 switch.	20	NOS.		
G.2	light Point -2 Light point control by 01 switch.	10	Nos.		
G.3	Wall bracket fan point control by 01 switch with two pin socket in fan end	10	NOS.		
G.4	Exust fan point with controlling switch	2	NOS.		
G.5	Coll bell point wiring with 2x 1.5 Cupper flixible wire in PVC regid pipe wiring with coll bell & push	2	NOS.		
G.6	Socket point wiring with 6Ams 5pin socket with controlling switch on board	10	NOS.		
H.	POWER WIRING				
H.1	Supply, Laying of Circuit line2x2.5mmsq +1x 1mmsq VC insulated copper wire form LDB to 6/16A or 6 Amps Plug point. Also note that 03 Nos 06 amps Plug to be connected from one circuit line	300	RFT		
H.2	Providing & fixing Computer Plug Points with 4 Nos. 16 Amp sockets. & 4 Nos. 16 AMP Switch complete with all necessary accessories.	6	NOS.		
I.	UPS WIRING				
I.1	Supply laying of circuit line 2 x 2.5 Sq.mm + 1 x 1.5 Sq.mm MSCC PVC insulated wires drawn in 20 mm dia PVC conduit pipe with ISI mark from UPS DB to computer.	300	RFT		
I.2	Supply laying of circuit line 2 x 6 Sq.mm + 1 x 1.5 Sq.mm MSCC PVC insulated wire through suitable size PVC conduit pipe with ISI mark from main DB to UPS incoming power DP controlling MCB	150	RFT		

SR.NO	DESCRIPTION	QTY.	UNIT	RATE (Rs.)	AMOUNT (Rs.)
I.3	Supply laying of circuit line 2 x 6 Sq.mm + 1 x 1.5 Sq.mm MSCC PVC insulated wire trough suitable size PVC conduit pipe with ISI mark from UPS power controlling DP MCB to UPS outgoing DB	150	RFT		
J.	UPS CLUSTER POINT	6	NOS.		
	Supply fixing of 2x6 Amps 5 pin socket + 1x16 amps 6 pin socket in with controlling switch MS box front plate with inter connection complete each work station				
K.	TELEPHONE WIRING :				
K.1	Telephone Wiring : Supply & laying of 2 pair PVC insulated wire , 0.5 mm down through PVC conduit pipe	100	RFT		
K.2	Supply & fixing of telephone outlet RJ-111 socket with suitable mounting box with front plate	2	NOS.		
K.3	Supply & fixing of telephone Junction box 10 pair krone type housed in MS box with Lock & key.	1	NOS.		
L.	A/C. ELECTRIFICATION :-				
L.1	Supply laying & connection of A/C. line for 1.5/2TR split A/C with 2x6 + 1x4 mmsq through 16 SWG pvc conduit with ISI Mark.	300	RFT		
L.2	Supply, fixing of A/C. 18-25 Amps stator complete with 20 amps socket in modular type box for split unit at 4.5 Ft from floor.	4	UNIT		
M.	GLOW SIGN BOARD WIRING :-				
M.1	Out door type Glow Sign board wiring :-Supply, laying of main line with 2x2.5 +1x1.5 mmsq through pvc conduit from main panel to glow sign board.	100	RFT		
M.2	Supply installation of 16 amps DP mcb at main entrance Glow sign board complete with timer & contractor (2NO + 2NC). 24 Hrs in original housing.	1	SET		
N.	ELECTRICAL FIXTURES :				
	Item includes Providing , assembling , fixing , testing & commissioning following fixtures including all accessories , lamps & extension chords as maybe necessary complete. All LED / Fluorescent fixtures (except down lighters) to be hung from the RCC ceiling by 20 KG grade adjustable GI chain& in NON False ceiling area they are to be hung by appropriate down rods.				
N.1	Buzzer or calling of Bajaj / Anchor / National / Homa	2	Nos.		
N.2	2x2 ft (36 W)LED Light Fitting including supplying and fixing for recess mounting on false ceiling	11	unit		
N.3	6" DIA, LED (12 Watt.) Recess mounting circular Down light.	16	unit		
N.5	12 W Panel Light FOR CASH	2	Nos.		
N.6	Supply & Fixing of 4 ft Long led tube light (18W)	8	Nos.		
N.7	Supply & Fixing of 2 ft Long led tube light (12W)	2	Nos.		
N.8	Supply & Fixing 400 mm diameter Wall Mounting Fan	12	Nos.		
N.9	250mm dia wall mounted exhaust fan of decorative plastic body and blade with louvers on the outside (Newtek/Cromton/Approved Equivalent)	3	Nos.		
O.	EARTHING STATION :				
O.1	Spike earthing with G.I. electrode 3 mts. Longx 50 mm dia (Class-B) including accessories & providing masonry enclosure with cover 300x300 mm plate having locking arrangement & watering funnel etc. with charcoal, sand & salt at alternate layer as required for & for main electrical panel earthing.	1	NOS.		

SR.NO	DESCRIPTION	QTY.	UNIT	RATE (Rs.)	AMOUNT (Rs.)
O.2	UPS earthing with 600x600 x3mm copper electrode with 25X3 mm copper flat connected from electrode to earth bus 3 mts. Depth from ground level 50 mm dia perforated G.I. pipe 3mtr Long for watering including accessories & providing masonry enclosure with cover 300x300 mm plate having locking arrangement & watering funnel etc. with charcoal, sand & salt at alternate layer as required for UPS earthing	1	NOS.		
O.3	Supply laying 6sq mm pvc insulated copper flexible wire in pvc conduit pipe from earth pit to ups earth bus,	50	RFT		
O.4	Laying earth 25X3mm copper flat from earth pit to earth bus with saddelling	50	RFT		
O.5	Making earth bus 25X3mm X200mm length copper earth bus with insulator	2	NOS.		
	TOTAL ELECTRICAL WORKS OF BRANCH				
IN WORDS :					

B.O.Q FOR ELECTRICAL WORK OF ATM- MANTESWAR BRANCH, PURBA BARDHAMAN

SR.NO	DESCRIPTION	QTY.	UNIT	RATE (Rs.)	AMOUNT (Rs.)
All installations shall comply with the requirements of the Indian Electricity Rules, 1956, as amended from time to time and as per relevant clauses of National Electrical Code, 1985. Installations shall conform in all respects to Indian Standard Code of Practice for electrical wiring installation IS. 732-1963 and IS 2274-1963. It shall also be in conformity with the regulations and requirements of the Local Electric Supply Authority. Wherever these specifications call for a higher standard of materials and/ or workmanship than those required by any of the above regulations, this specification shall take precedence over the said regulations and workmanship not covered by the above shall conform to the Indian standards, unless otherwise called for. Equipment shall be given tropical and fungicidal treatment as per IS – 3202.					
A.1	Main incoming switch fuse unit supplying , fixing 63-A TPN MCB for main incoming on M/s angel iron frame with 2-Nos cable entry box including connection with both end copper socketing by crimping method	1	SET		
A.2	Supplying and fixing 5 to 20-A range 3ph 4 wire KWH Meter in ATM including fitting fixing connection with all accessories	1	Each		
B.	SUPPLYING & LAYING OF CABLE				
	supplying & Laying of above cable with 2Nos 10 SWG.CU earth on wall/column including supply & fixing of M.S. clamps/galvanised bar saddles@ 300 mm apart, as required making holes and mending good damages				
B.1	Main panel to TPN ATM DB.4 core 16 Sq.mm.	15	RMT		
C.	CABLE GLAND AND FINISHING THE END				
	Supplying & fixing of compression type brass cable gland along with rubber rings for dust and moisture proof entry of following 1.1 KV grade aluminium conductor PVC insulated & PVC sheathed armoured cable and finishing the end by crimping method including supply and fixing of "Dowell" make solderless socket, tapes and jointing materials as required to be completed in all respect				
C.1	Main panel to TPN ATM DB.4 core 16 Sq.mm.	1	Each		
	Supply, installation, testing and commissioning of following MCB Distribution Board in sheet steel enclosure with double door and suitable for mounting on wall by surface / chase cutting and flushed with finished level to the position shown in the Electrical Layout complete in all respect, mending good all damages to the original finish, painting interconnection, etc. as required. :-				
D.	A.C DISTRIBUTION BOARD (A.C.DB)				
	4 way TPN MCB DB complete with busbar and the following MCBs/RCBO <u>Incoming:-</u> 1 no. : 415V 63 -A 4P MCB 10 KA <u>Outgoing :</u> 6 Nos 240V10-A SP MCB 6 Nos. 240V 20-A SP MCB 1 No. : Cable entry box	1	SET		
E.	POINT WIRING :				
	Supply,laying, connection & testing of light, fan point, wiring by 2x1.5mmsq(2x3/.029) + 1x1mmsq PVC insulated copper flexible wire maintaining the colour code as per direction in PVC conduite of 20mm with ISI mark 1.5 pvc wall thk. to conceal in wall partition mending good the damage, complete with pvc circular box, bend to be done as per drawing including 3 point ceiling rose where ever required. GI saddle to be used for fixing, pvc conduite/ flexible pipe may use if required in partition wall. All pvc pipes should be with ISI mark. No joints will be allowed inside pipe.Light, fan & plug point complete with modular type switch plate & MS box . Including the main circuit line 2x2.5mmsq+1x1.5mmsq earth PVC insulated Cu. Wire,maintaining the colour code. Circuit line for lighting switch board ,6Amps plug board are to be drawn from lighting DB to Lighting board & 6A plug point board, 6/16 Amps plug point line are to be drawn from power DB. 3Nos lighting board/ 03 Nos.6Amps plug are to be connected from one circuit & 02 Nos. 6/16 plug to be connected from one circuit (Lighting S.Board height-32" from floor).				
E.1	One light Point controlled by a 6A switch	2	Nos.		
E.2	light Point -2 Light point control by 01 switch.	2	Nos.		
F.	POWER WIRING :				

SR.NO	DESCRIPTION	QTY.	UNIT	RATE (Rs.)	AMOUNT (Rs.)
F.1	Socket point wiring with 6 amps 5 pin with controlling switch on board	2	Nos.		
F.2	Providing & fixing ATM MACHINE Points with 4 Nos. 16 Amp sockets. & 4 Nos. 16 AMP Switch complete with all necessary accessories.	2	No.		
F.3	Supply, Laying of Circuit line 2x2.5mmsq +1x 1mmsq VC insulated copper wire form LDB to 6/16A or 6Amps Plug point. Also note that 03 Nos 06 amps Plug to be connected from one circuit line	80	R.ft.		
G.	UPS WIRING :				
G.1	Supply fixing & connection of UPS circuit line with 2x2.5+1x1.5mmsq through pvc conduite 20mmdia 16 SWG wall thickness, with ISI mark, to lay from UPS MCB DB to plug point board. Two nos separate circuit to be drawn.	40	R.ft.		
G.2	Providing & fixing Raw Power Point includes 2x6/16, 6pin socket with 2nos.16A switch to provide behind ATM at 12" ht. from FFL.to be connected from UPS power.	2	Nos.		
H.	A/C. ELECTRIFICATION :				
H.1	Supply laying & connection of A/C. line for 1.0 TR A/C. window / split with 2x4 + 1x2.5 mmsq through 16 SWG pvc conduite with ISI Mark.	40	R.ft.		
H.2	Supply, fixing of A/C. 11-18 Amps stator complete with 20 amps socket in modular type box for split / window unit at 4.5 Ft from floor.	1	unit		
I.	ELECTRICAL FIXTURES :				
Item includes Providing , assembling , fixing , testing & commissioning following fixtures including all accessories , lamps & extension chords as maybe necessary complete.All CFL / Fluroscent fixtures (except down lighters) to be hung from the RCC ceiling by 20 KG grade adjustable GI chain & in NON False ceiling area they are to be hung by appropriate down rods.Work to be done as per drawing and instruction of the architect.(Including material, labour charges.Complete in all respect.)					
I.1	2x2 ft (36 W)LED Light Fitting including supplying and fixing for recess mounting on false ceiling	1	unit		
I.2	6" DIA, LED (12 Watt.) Recess mounting circular Down light.	4	unit		
I.3	Supply & Fixing of 4 ft Long led tube light (18W)	1	Nos.		
J.	GLOW SIGN BOARD WIRING :-				
J.1	Out door type Glow Sign board wiring :-Supply, laying of main line with 2x2.5 +1x1.5 mmsq through pvc conduite from main panel to glow sign board.	50	R.ft.		
J.2	Supply installation of 16 amps DP mcb at main entrance Glow sign board complete with timer & contractor (2NO + 2NC). 24 Hrs in orginal housing.	1	Set		
K.	EARTHING STATION :				
Earthing : Supply, Erection, Testing & Commissioning of 'Ashlok' Pipe earth station and Chemical compound bag, complete with civil works, etc. as per specs in accordance with latest IS-3043. Earthing conductors : Supply & laying of equipment earthing using following sizes of conductors/tapes including all accessories to erect/lay the conductor & as per specifications.					
K.1	Spike earthing with G.I. electrode 3 mts. Longx 50 mm dia (Class-B) including accessaries & providing masonry enclosure with cover 300x300 mm plate having locking arrangement & watering funnel etc. with charcoal, sand & salt at alternate layer as required for ATM earthing.	1	No.		
K.2	Supply laying 6sq mm pvc insulated copper flexible wire in pvc conduit pipe from earth pit to ups earth bus,	50	RFT		
K.3	Laying earth 25X3mm copper flat from earth pit to earth bus with saddelling	50	RFT		
K.4	Making earth bus 25X3mm X200mm length copper earth bus with insulator	1	Nos		
	TOTAL ELECTRICAL WORKS OF ATM				
IN WORDS :					

DATA CABLING WORK B.O.Q- MANTESWAR BRANCH, PURBA BARDHAMAN

DATA CABLING WORK B.O.Q- MANTESWAR BRANCH, PURBA BARDHAMAN					
SR. NO.	DESCRIPTION	QTY.	UNIT	RATE (Rs.)	AMOUNT (Rs.)
1	9 u rack Digi Link / Lucent/ HCL co. make supply & installation type Cat 6 PDU - box 1 no., Fan set complete unit.	1	Unit		
2	Digi Link / Lucent/ HCL make Patch panel Unit Supply and Installation of Cat 6, 24 ports Gigabit 10/100/1000 Rack mountable Unmanged Switch	1	Unit		
3	Digi Link / Lucent/ HCL make Patch Cord Cat 6 face plate - 2 port including mounting box for each workstation.	10	Nos.		
4	Supply & Laying of Cat 6 cables 4 Core through pr-laid rigid PVC conduit from server to computer data socket including interconnection mending good, etc. as required (Digi Link / Lucent/ HCL make)	400	R.ft.		
5	Digi Link / Lucent/ HCL make Single Ported RJ 45 IO BOX	10	Nos.		
6	Supply & fixing of 1 mtr patch cord	10	Nos.		
	TOTAL DATA CABLING WORKS				
IN WORDS:					

B.O.Q FOR UCO BANK- MANTESWAR BRANCH, PURBA BARDHAMAN**SUMMARY**

SL NO	DISCRIPTION	AMOUNT (Rs.)
A	BANKING AREA	
	II) ELECTRICAL WORK	
	TOTAL COST OF BANKING AREA	
B	ATM AREA	
	II) ELECTRICAL WORK	
	TOTAL COST OF ATM AREA	
C	DATA CABLING WORK	
	GRAND TOTAL (A+B+C)	
IN WORDS:THREE LAKH ELEVEN THOUSAND FIVE HUNDRED FIFTY RUPEES ONLY		

Note:

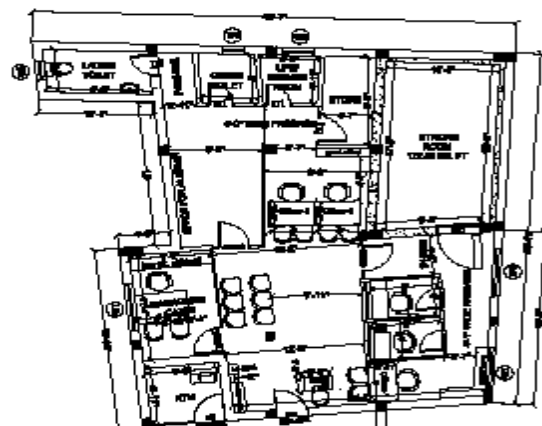
** GST COST IS EXCLUDED..

**Cost including all material, labour and Transport charges etc. all complete. The work to be

UCO BANK- MANTESWAR BRANCH, PURBA BARDHAMAN

LIST OF APPROVED MATERIALS FOR ELECTRICAL WORK

Sl.NO	Items	Approved make
1	MS pipe ISI mark. 16 Swg	BEC / NIC
2	MS fittings.	BEC / NIC
3	Wire PVC insulated copper flexible wire.	Finolex/Havells/Gerard/ Mescab
4	A.C. stator.	North west / Havells
5	Switch, socket modular plate.	Crabtree/MDS/Anchore AVE/ Indoasian
6	Armoured cable.	Nicco/Glostark/KDK/Havells.
7	Telephone Socket RJ -11.	Crabtree/MDS
8	MCB, DB.	MDS/Havells/L&T Hagger/ Indoasian
9	Telephone cable (0.51mmsq).	Netco/Delton.
10	Light fittings.	Wipro/Philips/Crompton/Havells/Globe/ Mescab
11	Lugs.	Dowells.
12	Terminals Connector.	ESSEN
13	Exhaust fan.	GEC/ EPC.
14	Ceiling Fan/wall mounted fan.	Orient / Crompton / Havells / USHA
15	SFU/SPN/TPN S.M. housing /Open execution front handle.	Havells/ L&T/ Semeins.
16	Telephone connector.	KORN type.
17	Volt Meter / Amps Meter. 96x96 mm.	AE / L&T.
18	Current transformer.	Kuppa / L&T.
19	Selector switch.	Kaycee / Indoasian
20	Sliding fuse / DZ fuse.	Bharat Lender/ BCH.
21	PVC tape.	Steel grip/ Anchore.
22	Join Box. 6"x4" MS box Heavy type.	Joiti make.
23	Bearer Call Bell.	Max / Homa.
24	Cable Gland Brass make.	Arun (heavy type).
25	Speaker.	Philips / Bosh.
26	LED indicator. 20 dia. (Bright type).	Mikadov / L&T/ MDS.
27	CD player.	Philips / Sony.
28	Amplifier	Philips / Sony.
29	Speaker wire.	Finolex.
30	PL /TL lamp.	Philips.
31	PVC flexible Pipe.	Hunuman.
32	Smoke / heat Detector.	Appolo / Dats.
33	Manual call point.	Minimax/Dats.
34	Security Alarm Hooter.	Philips/Dats.
35	Cat -6 cable	Digi Link / Lucent/ HCL.
36	RJ - 45 socket.	Digi Link / Lucent/ HCL.
37	Patch panel	Digi Link / Lucent/ HCL.
38	HUB.	Digi Link / Lucent/ HCL.
39	PVC Rigid pipe. MMS.	Precession / AKG / Pesto
40	All other items not covered above	As per sample approved by Bank/ Architect



OPEN SPACE
FOR PARKING

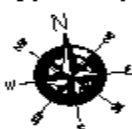
Bank front and main road
no obstruction will be allowed
and that will be fully used for
parking and entrance of branch

THANA ROAD

PROPOSED PLAN OF GROUND FLOOR
UCO BANK,
MANTESWAR BRANCH

Scale for
landlord

SCALE 1:100



AREA STATEMENT:

A) TOTAL BUILT UP AREA OF BANK+ATM:

1270 SQ.FT.

B) TOTAL CARPET AREA OF BANK:

(Excluding Toilet, wall, column, UCC etc.): 962 SQ.FT.

C) TOTAL CARPET AREA OF ATM: 40 SQ.FT.

D) TOTAL CARPET AREA OF BANK + ATM:

1000 SQ.FT.

SCHEDULE OF DOORS

TYPE	DESCRIPTION	WIDTH & HEIGHT (FT-INCH)	QTY	REMARKS
C. GL.	Collapsible Gate	4'-0" x 8'-6"	1	
GD	Full glass door	3'-6" x 6'-6"	2	with main door closer
WGD	Window Glass door	3'-6" x 6'-6"	2	with main door closer
D1	PVC Door	2'-6" x 6'-6"	4	door to main road
D2	Flush Door	3'-6" x 6'-6"	1	door to main road
D3	Flush Door	4'-0" x 6'-6"	1	door to main road
SD	Screen Room Door	As per Bank Specification		
RS	Rolling Shutter	11'-0" x 6'-6"	2	

SCHEDULE OF WINDOWS

TYPE	DESCRIPTION	WIDTH & HEIGHT (FT-INCH)	QTY	REMARKS
W1	Aluminum sliding window	5'-0" x 4'-6"	3	with External grill fitting
W2	Aluminum sliding window	3'-0" x 4'-6"	1	with External grill fitting
W3	Aluminum sliding window	2' x 2'	2	with External grill fitting

	COLUMN		WOODEN PARTITION
	BRICK WALL		R.C.C. WALL

SCALE 1:100

UCO BANK
ZONAL OFFICE BURDWAN
MANTESWAR BRANCH
PURBA BURDWAN

DRG NO - UCO / MANTESWAR SCHEME

DRAWN BY: RD

DATE: 18.01.2022

ARCHI SPACE CONSULTANT

PACIFIC WING, 3RD FLOOR, BHA, B.L. MALLICK ROAD,
NEAR BAHAMANI HOSPITAL, KOLKATA - 700047.
MOB NO. - 9880088888

